

Transportation 4.0 Trend

Muhammad Ikhsan Setiawan and Ronny Durrotun Nasihien

Department of Civil Engineering, Narotama University, Surabaya, Indonesia
ikhsan.setiawan@narotama.ac.id

Agus Sukoco and Amrun Rosyid

Department of Management, Narotama University, Surabaya, Indonesia

Mohd Adib Mohd Razi

Department of Civil Engineering, Universiti Tun Hussein Onn Malaysia, Malaysia

Muhammad Isradi

Department of Civil Engineering, Universitas Mercu Buana, Jakarta, Indonesia

Paisal Halim and Syamsiah Badruddin

Universitas Nasional, Jakarta, Indonesia

Abstract

Digital transportation is a digital service facility integrated and connected to all modes of transportation through a technology-based or digital platform. This research was conducted descriptively based on scopus.com data, where researchers obtained 62 documents entitled digital transportation for the last ten years (2012-2021). The Russian Federation has the most research articles on digital transport, followed by China, the United States, and the United Kingdom. Ten affiliates have the most digital transportation research articles, five research institutes from Russia, two research institutes from China, and one research institute from Indonesia, Germany, and Australia. The Department of Computer Science is the favourite for research articles on digital transportation, followed by Engineering and Social Sciences. The European Commission has the most research funding sponsors on digital tourism, followed by Innovate U.K.

Keywords

Digital transportation, digital service, Computer Science, Indonesia

1. Introduction

Digital transportation is a digital service facility integrated and connected to all modes of transportation through a technology-based or digital platform. This research was conducted descriptively based on scopus.com data, where researchers obtained 62 documents entitled digital transportation for the last ten years (2012-2021). Scopus identifies trends for critical topics with access to manipulable graphical views, charts, and tables so you can view specific parameters. Scopus helps researchers find critical insights and easily communicate them with others. Search results analysis help researchers understand their search metrics by visual examination of search results divided into seven categories (year, source, author, application, country or region, document type, and subject area). Compare journals helps authors find a complete analysis of the journal landscape. Researchers can choose up to 10 journals to upload to charts for comparative analysis and compare using various metrics. The article metrics module helps researchers see the impact of citations and scholarly community engagement for an article. The sidebar on the article page highlights the minimal number of meaningful metrics researchers need to evaluate the effect of citations and levels of community engagement. Clicking will open a metrics detail page showing all available metrics and their underlying content, which can be used for further analysis and understanding. Citation Overview helps analyze citation trends for a specific article, result set, or list of author documents. The overview displays the number of citations per year for each piece you select in tabular format. The author profile page helps analyze and track individual citation history. From the profile page, one can view total citations, author document counts, h-index, ORCID records (where available), and

access a collection of in-depth and visual analysis tools designed to give a better picture of the history and influence of individual publications. (M.I. Setiawan, Abdullah, Lestari, & Yuniningsih, 2019).

2. Literature Review

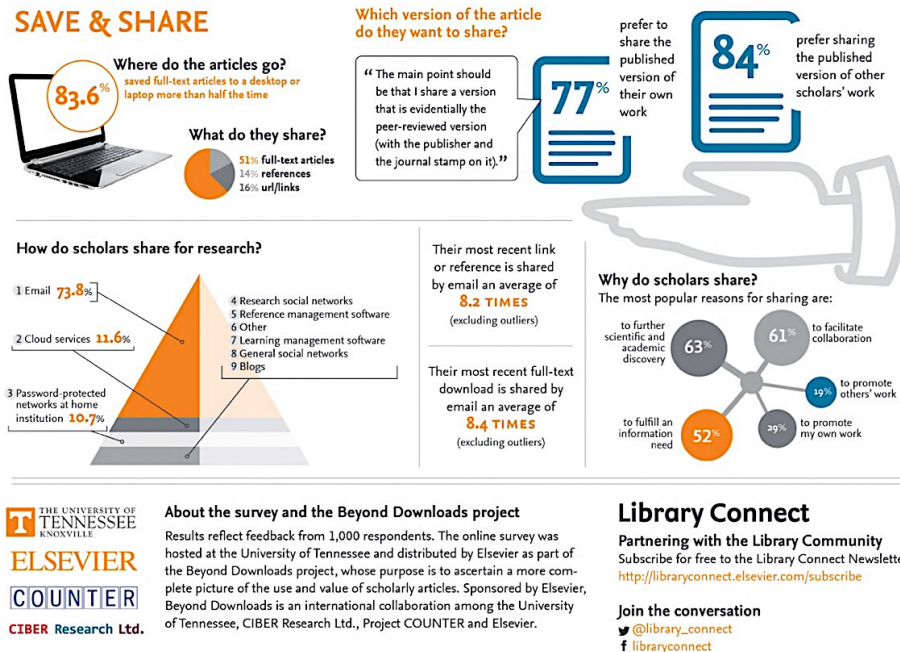
Based on years 2018-2020 research papers, include:

1. Ikhsan Setiawan, Muhammad, Durrotun Nasihien, R., Mohammad Razi, M. A., & Ting, I.-H. (2020). Sustainable Mobility, Maritime, Airport, and Regional Government Revenue and Expenditure (APBD). *IOP Conference Series: Earth and Environmental Science*
2. Ikhsan Setiawan, Muhammad, Sukoco, A., Harmanto, D., Halim, P., Mursidi, A., & Ting, I.-H. (2020). Sustainable Cities, Transportation and Warehousing GDP. *IOP Conference Series: Earth and Environmental Science*
3. Setiawan, M.I., Nasihien, R.D., Razi, M. A. B. M. (2020). Sustainable mobility, development of integrated public transportation technology 4.0 gis supports regional development. *Proceedings of the International Conference on Industrial Engineering and Operations Management Detroit, Michigan, USA*
4. Setiawan, M.I., Sulandrianingrum, K. N. (2020). The impact of infrastructure in improving health, education, and community increases the quality of human resources in Ngawi. *Proceedings of the International Conference on Industrial Engineering and Operations Management Detroit, Michigan, USA*
5. Setiawan, M.I., Dhaniarti, I., Utomo, W. M., Sukoco, A., Mudjanarko, S. W., Hasyim, C., Prasetijo, J., Kurniasih, N., Wajdi, M. B. N., Purworuismiardi, T., Suyono, J., Sudapet, I. N., Nasihien, R. D., Wulandari, D. A. R., Ade, R. T., Atmaja, W. M. T., Sugeng, & Wulandari, A. (2018). The Correlations between Airport Sustainability and Indonesian Economic Growth. *IOP Conference Series: Earth and Environmental Science*
6. Setiawan, M.I., Hasyim, C., Kurniasih, N., Abdullah, D., Napitupulu, D., Rahim, R., Sukoco, A., Dhaniarti, I., Suyono, J., Sudapet, I. N., Nasihien, R. D., Wulandari, D. A. R., Reswanda, Mudjanarko, S. W., Sugeng, & Wajdi, M. B. N. (2018a). E-Business, Airport Development and Its Impact on the Increasing of Information of Communication Development in Indonesia. *Journal of Physics: Conference Series*
7. Setiawan, M.I., Hasyim, C., Kurniasih, N., Abdullah, D., Napitupulu, D., Rahim, R., Sukoco, A., Dhaniarti, I., Suyono, J., Sudapet, I. N., Nasihien, R. D., Wulandari, D. A. R., Reswanda, Mudjanarko, S. W., Sugeng, & Wajdi, M. B. N. (2018b). E-Business, the impact of regional growth on the improvement of Information and Communication Development. *Journal of Physics: Conference Series*
8. Setiawan, M.I., Hasyim, C., Kurniasih, N., Abdullah, D., Napitupulu, D., Rahim, R., Sukoco, A., Dhaniarti, I., Suyono, J., Sudapet, I. N., Nasihien, R. D., Wulandari, D. A. R., Reswanda, Mudjanarko, S. W., Sugeng, & Wajdi, M. B. N. (2018c). E-Business, the impact of the Regional Government Development (APBD) on Information and Communication Development in Indonesia. *Journal of Physics: Conference Series*
9. Setiawan, M.I., Mohammad Razi, M. A. B., Nasihien, R. D., & Bon, A. T. (2019). Sustainable mobility and transportation research in Indonesia. *Proceedings of the International Conference on Industrial Engineering and Operations Management, November*.
10. Setiawan, M.I., Surjokusumo, S., Ma'Soem, D. M., Johan, J., Hasyim, C., Kurniasih, N., Sukoco, A., Dhaniarti, I., Suyono, J., Sudapet, I. N., Nasihien, R. D., Mudjanarko, S. W., Wulandari, A., Ahmar, A. S., & Wajdi, M. B. N. (2018). Business Centre Development Model of Airport Area in Supporting Airport Sustainability in Indonesia. *Journal of Physics: Conference Series*
11. Setiawan, M I, Sukoco, A., Halim, P., Hermanto, D., Bin Bon, A. T., Wan Ibrahim, M. H., Mohammad Razi, M. A., Othman, N. B., Bin Juki, M. I., Bin Mohd Ali, A. Z., & Utomo, W. M. (2019). Airport, passengers, and aircraft are supporting regional growth. *Proceedings of the International Conference on Industrial Engineering and Operations Management*
12. Setiawan, M I, Sukoco, A., Mudjanarko, S. W., Nasihien, R. D., Suyono, J., Hermanto, D., Bin Bon, A. T., & Ibrahim, M. H. W. (2019). Indonesia airport, passenger, and aircraft impact on regional budget (APBD). *Proceedings of the International Conference on Industrial Engineering and Operations Management*
13. Setiawan, M Ikhsan, Dhaniarti, I., Hasyim, C., T Atmaja, W. M., Sugeng, S., Mulyo Utomo, W., Sukoco, A., Mudjanarko, S. W., Suyono, J., Sudapet, I. N., Durrotun Nasihien, R., Wulandari, D. A. R., T Ade, R., Prasetijo, J., Kurniasih, N., & Wajdi, M. B. N. (2018). Correlations Analysis of Airport Sustainability and Local Government Budget. *International Journal of Integrated Engineering*

Researchers get information that digital transportation proliferates nowadays in port areas and airports, which integrates public transit supporting facilities for improving environmental quality, especially in East Java.

3. Methods and Data Collection

Digital transportation is a digital service facility integrated and connected to all modes of transportation through a technology-based or digital platform. This research was conducted descriptively based on SCOPUS.COM data. Researchers obtained 62 documents entitled digital transportation articles for the last ten years (2012-2021). SCOPUS.COM identifies trends for critical topics with access to manipulable graphical views, charts, and tables so you can view specific parameters. SCOPUS.COM helps you find key insights and easily communicate them with others. Search results analysis: Understand your search metrics better with a visual examination of your search results divided into seven categories (year, source, author, application, country or region, document type, and subject area). Compare journals: Get a complete analysis of the journal landscape. Choose up to 10 journals to upload to charts for comparative analysis and compare using various metrics. Article metrics module: Quickly see the impact of citations and scholarly community engagement for an article. The sidebar on the article page highlights the minimal number of meaningful metrics researchers need to evaluate the effect of citations and levels of community engagement. Clicking will open a metrics detail page showing all available metrics and their underlying content, which can be used for further analysis and understanding. Citation Overview: Analyze citation trends for a specific article, result set, or list of author documents. The overview displays the number of citations per year for each article you select in tabular format. Author profile page: You can quickly analyze and track individual citation history. From the profile page, one can view total citations, author document counts, h-index, ORCID records (where available), and access a collection of in-depth and visual analysis tools designed to give a better picture of the history and influence of individual publications. (M.I. Setiawan, Abdullah, Lestari, & Yuniningsih, 2019). The analysis mode uses (1) research country documents; (2) affiliation documents; (3) affiliation documents; and (4) funding sponsor documents



For more information, visit the project hub at:

<http://dollarupload.com>



Figure 1. SCOPUS.COM profiles

Figure 1 above shows the SCOPUS.COM profile.

4. Results and Discussion

First, the researcher obtained 12 research state documents from the Russian Federation. China follows it with eight documents, the United States 8, Britain 4, Germany 3, Indonesia 3, Portugal 3, and Switzerland 3 documents. The Russian Federation has the most research articles on digital transport, followed by China, the United States, and the United Kingdom.

Documents by country or territory

Compare the document counts for up to 15 countries/territories.

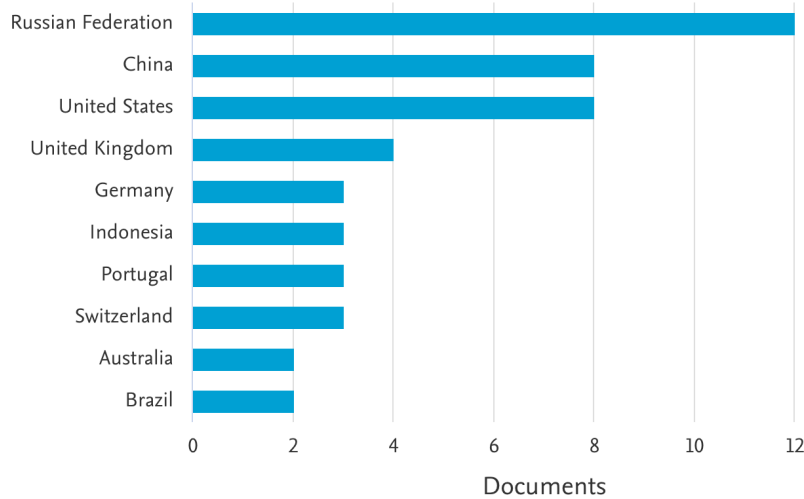


Figure 2. the documents of the research country

Figure 2 above shows the SCOPUS.COM the documents of the research country about World Digital Transportation Research.

Second, the researcher obtained affiliation documents. The documents obtained were from Saint Petersburg State Marine Technical University (Russia) 2 documents, Moscow Automobile and Road Construction State Technical University MADI (Russia) 2, Peter the Great St. Petersburg Polytechnic University (Russia) 2, Russian University of Transport (Russia) 2, Chinese Academy of Sciences (China) 2, Bina Nusantara University (Indonesia) 2, Technical University of Munich (Germany) 2, Beijing Jiaotong University (China) 2, University of Technology Sydney (Australia) 2, and Emperor Alexander I St. State Transport University. Petersburg (Russia) 2 documents. All ten affiliates have the most research articles on digital transportation.

Documents by affiliation

Compare the document counts for up to 15 affiliations.

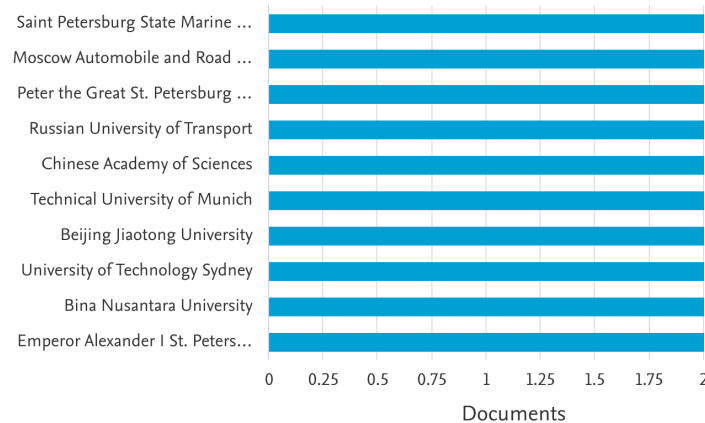


Figure 3. the documents of the affiliation

Figure 3 above shows the SCOPUS.COM the documents of the affiliation about World Digital Transportation Research.

Third, the researcher obtains the document of the field of study. The documents obtained consisted of Computer Science 30 documents, Engineering 25, Social Studies 10, Business, Management and Accounting 9, Mathematics 9, Decision Science 7, and Environmental Science 7 documents. The field of study in Computer Science is the favorite research article on digital transportation, followed by Engineering and Social Sciences.

Documents by subject area

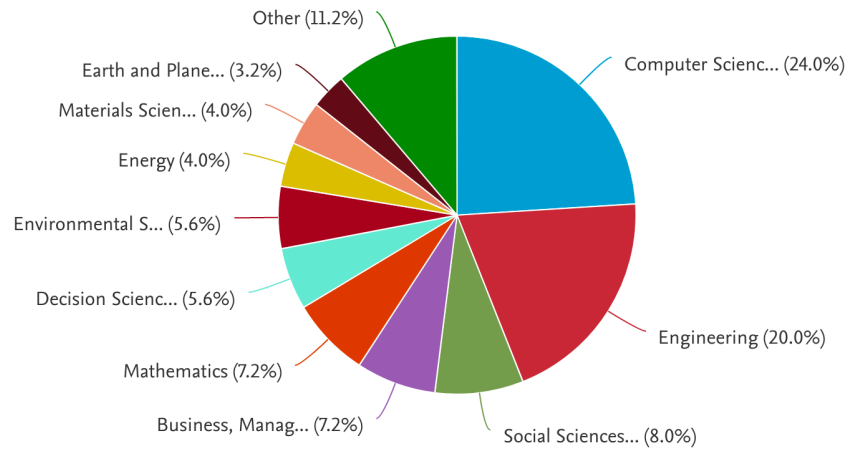


Figure 4. the documents of the subject area

Figure 4 above shows the SCOPUS.COM the documents of the subject area about World Digital Transportation Research.

Finally, researchers obtained funding sponsor documents. The invention consists of 3 European Commission documents, Innovate U.K. 2, and others only 1 document. Thus, the European Commission has the most research funding sponsors on digital tourism, followed by Innovate U.K.

Documents by funding sponsor

Compare the document counts for up to 15 funding sponsors.

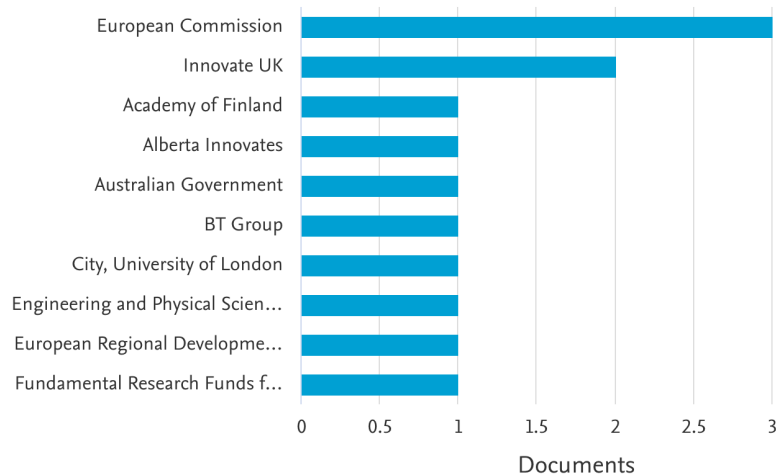


Figure 5. the documents of the funding sponsor

Figure 5 above shows the SCOPUS.COM the documents of the funding sponsor about World Digital Transportation Research.

5. Conclusion

Digital transportation is a digital service facility integrated and connected to all modes of transportation through a technology-based or digital platform. This research was conducted descriptively based on scopus.com data, where researchers obtained 62 documents entitled digital transportation for the last ten years (2012-2021). The Russian Federation has the most research articles on digital transport, followed by China, the United States, and the United Kingdom. Ten affiliates have the most digital transportation research articles, five research institutes from Russia, two research institutes from China, and one research institute from Indonesia, Germany, and Australia. The Department of Computer Science is the favourite for research articles on digital transportation, followed by Engineering and Social Sciences. The European Commission has the most research funding sponsors on digital tourism, followed by Innovate U.K.

Acknowledgments

The authors thank to Direktorat Jenderal Pendidikan Tinggi Kementerian Pendidikan dan Kebudayaan Republik Indonesia, for their Grants Financial Support, Penelitian Terapan Unggulan Perguruan Tinggi scheme, 2021.

References

- Ikhsan Setiawan, Muhammad, Durrotun Nasihien, R., Mohammad Razi, M. A., & Ting, I.-H. (2020). Sustainable Mobility, Maritime, Airport, and Regional Government Revenue and Expenditure (APBD). *IOP Conference Series: Earth and Environmental Science*, 498, 012111. <https://doi.org/10.1088/1755-1315/498/1/012111>
- Ikhsan Setiawan, Muhammad, Sukoco, A., Harmanto, D., Halim, P., Mursidi, A., & Ting, I.-H. (2020). Sustainable Cities, Transportation and Warehousing GDP. *IOP Conference Series: Earth and Environmental Science*, 498, 012112. <https://doi.org/10.1088/1755-1315/498/1/012112>
- Setiawan, M.I., Nasihien, R.D., Razi, M. A. B. M. (2020). Sustainable mobility, development of integrated public transportation technology 4.0 gis supports regional development. *Proceedings of the International Conference on Industrial Engineering and Operations Management Detroit, Michigan, USA*, 3919–3926.
- Setiawan, M.I., Sulandrianingrum, K. N. (2020). The impact of infrastructure in improving health, education, and community increases the quality of human resources in Ngawi. *Proceedings of the International Conference on Industrial Engineering and Operations Management Detroit, Michigan, USA*.
- Setiawan, M.I., Dhaniarti, I., Utomo, W. M., Sukoco, A., Mudjanarko, S. W., Hasyim, C., Prasetyo, J., Kurniasih, N., Wajdi, M. B. N., Purworusmiardi, T., Suyono, J., Sudapet, I. N., Nasihien, R. D., Wulandari, D. A. R., Ade, R. T., Atmaja, W. M. T., Sugeng, & Wulandari, A. (2018). The Correlations between Airport Sustainability and Indonesian Economic Growth. *IOP Conference Series: Earth and Environmental Science*, 140(1). <https://doi.org/10.1088/1755-1315/140/1/012089>
- Setiawan, M.I., Hasyim, C., Kurniasih, N., Abdullah, D., Napitupulu, D., Rahim, R., Sukoco, A., Dhaniarti, I., Suyono, J., Sudapet, I. N., Nasihien, R. D., Wulandari, D. A. R., Reswanda, Mudjanarko, S. W., Sugeng, & Wajdi, M. B. N. (2018a). E-Business, Airport Development and Its Impact on the Increasing of Information of Communication Development in Indonesia. *Journal of Physics: Conference Series*, 1007(1). <https://doi.org/10.1088/1742-6596/1007/1/012046>
- Setiawan, M.I., Hasyim, C., Kurniasih, N., Abdullah, D., Napitupulu, D., Rahim, R., Sukoco, A., Dhaniarti, I., Suyono, J., Sudapet, I. N., Nasihien, R. D., Wulandari, D. A. R., Reswanda, Mudjanarko, S. W., Sugeng, & Wajdi, M. B. N. (2018b). E-Business, the impact of regional growth on the improvement of Information and Communication Development. *Journal of Physics: Conference Series*, 1007(1). <https://doi.org/10.1088/1742-6596/1007/1/012044>
- Setiawan, M.I., Hasyim, C., Kurniasih, N., Abdullah, D., Napitupulu, D., Rahim, R., Sukoco, A., Dhaniarti, I., Suyono, J., Sudapet, I. N., Nasihien, R. D., Wulandari, D. A. R., Reswanda, Mudjanarko, S. W., Sugeng, & Wajdi, M. B. N. (2018c). E-Business, the impact of the Regional Government Development (APBD) on Information and Communication Development in Indonesia. *Journal of Physics: Conference Series*, 1007(1). <https://doi.org/10.1088/1742-6596/1007/1/012045>
- Setiawan, M.I., Mohammad Razi, M. A. B., Nasihien, R. D., & Bon, A. T. (2019). Sustainable mobility and transportation research in Indonesia. *Proceedings of the International Conference on Industrial Engineering and Operations Management, November*.
- Setiawan, M.I., Surjokusumo, S., Ma'Soem, D. M., Johan, J., Hasyim, C., Kurniasih, N., Sukoco, A., Dhaniarti, I., Suyono, J., Sudapet, I. N., Nasihien, R. D., Mudjanarko, S. W., Wulandari, A., Ahmar, A. S., & Wajdi, M. B. N. (2018). Business Centre Development Model of Airport Area in Supporting Airport Sustainability in Indonesia. *Journal of Physics: Conference Series*, 954(1). <https://doi.org/10.1088/1742-6596/954/1/012024>

- Setiawan, M I, Sukoco, A., Halim, P., Hermanto, D., Bin Bon, A. T., Wan Ibrahim, M. H., Mohammad Razi, M. A., Othman, N. B., Bin Juki, M. I., Bin Mohd Ali, A. Z., & Utomo, W. M. (2019). Airport, passengers, and aircraft are supporting regional growth. *Proceedings of the International Conference on Industrial Engineering and Operations Management, 1*(MAR), 1759–1761. <https://www.scopus.com/inward/record.uri?eid=2-s2.0-85067254447&partnerID=40&md5=6e40269aa4760da49c96cef24c6c75c6>
- Setiawan, M I, Sukoco, A., Mudjanarko, S. W., Nasihien, R. D., Suyono, J., Hermanto, D., Bin Bon, A. T., & Ibrahim, M. H. W. (2019). Indonesia airport, passenger, and aircraft impact on regional budget (APBD). *Proceedings of the International Conference on Industrial Engineering and Operations Management, 1*(MAR), 1752–1753. <https://www.scopus.com/inward/record.uri?eid=2-s2.0-85067235786&partnerID=40&md5=5b345595b49130ff73bbea0a0334b8f6>
- Setiawan, M Ikhsan, Dhaniarti, I., Hasyim, C., T Atmaja, W. M., Sugeng, S., Mulyo Utomo, W., Sukoco, A., Mudjanarko, S. W., Suyono, J., Sudapet, I. N., Durrotun Nasihien, R., Wulandari, D. A. R., T Ade, R., Prasetyo, J., Kurniasih, N., & Wajdi, M. B. N. (2018). Correlations Analysis of Airport Sustainability and Local Government Budget. *International Journal of Integrated Engineering, 10*(2), 71–76. <https://doi.org/10.30880/ijie.2018.10.02.014>

Biographies

Muhammad Ikhsan Setiawan received his Bachelor of Civil Engineering (1998) from Universitas Merdeka, Malang, Indonesia, and Master of Civil Engineering (2000) from Universitas Indonesia before pursuing Doctor of Philosophy (Civil Engineering) at Universitas Tarumanagara, Indonesia (2018). He is currently an Assistant Professor at the Faculty of Civil Engineering, Narotama University, Indonesia, and registered as Engineer Expert Certified. He leads a research team in Sustainable and Digital for Transportation, Tourism, and Regional Economic, a grant from Indonesia's Ministry of Education. His research interests include Smart City and Sustainability. He is also a Chairman of WORLD CONFERENCE. I.D., IPEST commerce, SONGSONG ridt, member of IEEE, editors, and reviewers of some journals indexed in SCOPUS, DOAJ, CROSSREF, and GOOGLE. He is a Vice-Rector of Narotama University, Indonesia

Ronny Durrotun Nasihien is an Assistant Professor at Faculty of Engineering, Universitas Narotama, Surabaya Indonesia. He earned Bachelor of Architecture from Institut Teknologi Adhi Tama Surabaya, Indonesia (1997), Master of GIS from Institut Teknologi Sepuluh Nopember, Surabaya, Indonesia (2011) and Doctoral of Management Business from STESIA Indonesia (2021). He has been recognized as a professional architecture and construction management consultant with over 20 years of experience.

Agus Sukoco is an Assistant Professor at the Faculty of Economics and Business, Universitas Narotama, Surabaya, Indonesia. He earned Bachelor of Marine Engineering in faculty naval engineering from Institut Teknologi Sepuluh Nopember (1996), Master of Management Business from Narotama University (2006), and Doctoral of Management Business from STESIA Indonesia (2021). He has been recognized as a professional management business consultant with over 18 years of experience working with closely-held businesses. He is also Editor in Chief of IJEBD International Journal of Entrepreneurship and Business Development, indexed International DOAJ, as Head of Department Management, Narotama University, Indonesia.

Amrun Rosyid received his Bachelor of Mechanical Engineering (2002) from Sepuluh Nopember Institute of Technology (ITS), Surabaya, Indonesia and Master of Management (2018) from STIE YAPAN Surabaya. He is currently a Lecturer at the Faculty of Business and Management, Narotama University, Indonesia, and a Mendelley advisor. He often gives workshops on reference managers. His research interests include Human Resource Management, Strategic Management, and Tourism. He is also an International Journal Editor and often offers workshops on writing papers for international publications.

Mohd Adib Mohammad Razi received his Bachelor of Civil Engineering (2001) from University Technology Malaysia, Malaysia and Master of Civil Engineering (2003) from University Technology Malaysia before pursuing Doctor of Philosophy (Civil Engineering) at University Technology MARA, Malaysia (2014). He currently an Associate Professor at Faculty of Civil Engineering and Built Environment, University Tun Hussein Onn Malaysia, Malaysia and registered as Member of Engineer Malaysia, Board of Engineers Malaysia. He currently act as Head of Centre of research for Eco-Hytech Research Centre focusing on Water Resources, Ecohydrology and technology of

hydraulic and hydrology system. He receives many local grants from Malaysia government and industry focus on water resource and flood modelling. His research interests include Ecohydrology, hydraulic and hydrology structure, ground water and coastal engineering. He is also a head of panel for Journal of Water Resources Management and reviewer for several proceedings and journal papers.

Muhammad Isradi, born in Kandangan on 18 August 1972. He is the secretary of the Civil Engineering Department at Mercu Buana University. He earned a degree in Civil Engineering from Universitas Muhammadiyah Malang in 1998 with the thesis entitled "One-Way Flat Plate Planning at Ratu Plaza Madiun. He then obtained a Master's degree in Civil Engineering, Transportation Concentration from Brawijaya University in 2001 with a thesis entitled "Family Movement Awakening Model in Sawojajar Housing Area, Malang." He also teaches several subjects such as Pavement Planning, Geometric Road Planning, Transportation Planning, and Environmental Engineering.

Paisal Halim received a bachelor's degree in Social Science Education – Pancasila Moral Education (1985) from the Indonesian Teacher Training and Education Institute (IKIP), Masters in Humanities in 1997 from Hasanuddin University Makassar Indonesia, Doctor of Social Science Philosophy (Sociology) 2008 Hasanuddin University, Makassar Indonesia. Currently, he is a lecturer and professor in the postgraduate government administration study program at the National University of Jakarta, Indonesia. Actively providing various training and mentoring for young lecturers in writing journals, books and other scientific works related to the fields of sociology, government science and public policy at several universities in Indonesia. Currently, he is the President of IPEST (an international association of economic, social and technology researchers and founder of various e-journals: JILPR Indonesia Law and Policy Policy, IJESS International Journal of Education and Social Science. His research interests include Human Resource Management, development sociology, public policy, leadership, government science and tourism

Syamsiah Badruddin received her Bachelor of Education Administration (1987) from Institut Keguruan dan Ilmu Pendidikan (IKIP) Ujung Pandang, Indonesia and Master of Population And HR Development from Universitas Hasanuddin, Indonesia (1997), before pursuing Doctor of Social Science at Universitas Hasanuddin, Indonesia (2004). She is currently a Professor at Faculty of Social Science and Political Science, National University, Indonesia and registered as Certified International Human Capital Management (CIHCM). She currently leads a research team in Community Social Network As Engineering WFD (Work Form Dieng) The Economy During The Implementation Of PPKM During The Covid-19 Pandemic, grant from National University, Indonesia. Her research interests include Social Entrepreneurship, Management and Supply Chain, Social Engineering and Tourism. She is also a Member of IPEST commerce, ADRI, editors and reviewers some Journal of National University indexed GOOGLE, also until now as Chairman of Indonesian Institute of Public Policy Studies (LKKPI), South Sulawesi Province, Indonesia and as Head of International Journal and Publication Clinic at Faculty of Social Science and Political Science, National University, Indonesia.